

MISSION ZOMBIE MODE

12 DAYS OF APOCALYPSE

HARD / 4 ZOMBIE HEROES

This Mission requires the rules and components found in

- Marvel Zombies

Designed by: **LibraSeth**

The holiday season is tough for zombies. It's doubtful that we will receive any gifts this year, or even some good will from our fellow man. The holiday has become so commercial. Oh, and there is a major push to kill us off by New Year's Eve. There's only 12 days left until the big day, so let's all pitch in to make this the best zombie Christmas ever!

Tiles needed: **1R, 2R, 7R, 8R**

1R	2R
7R	8R

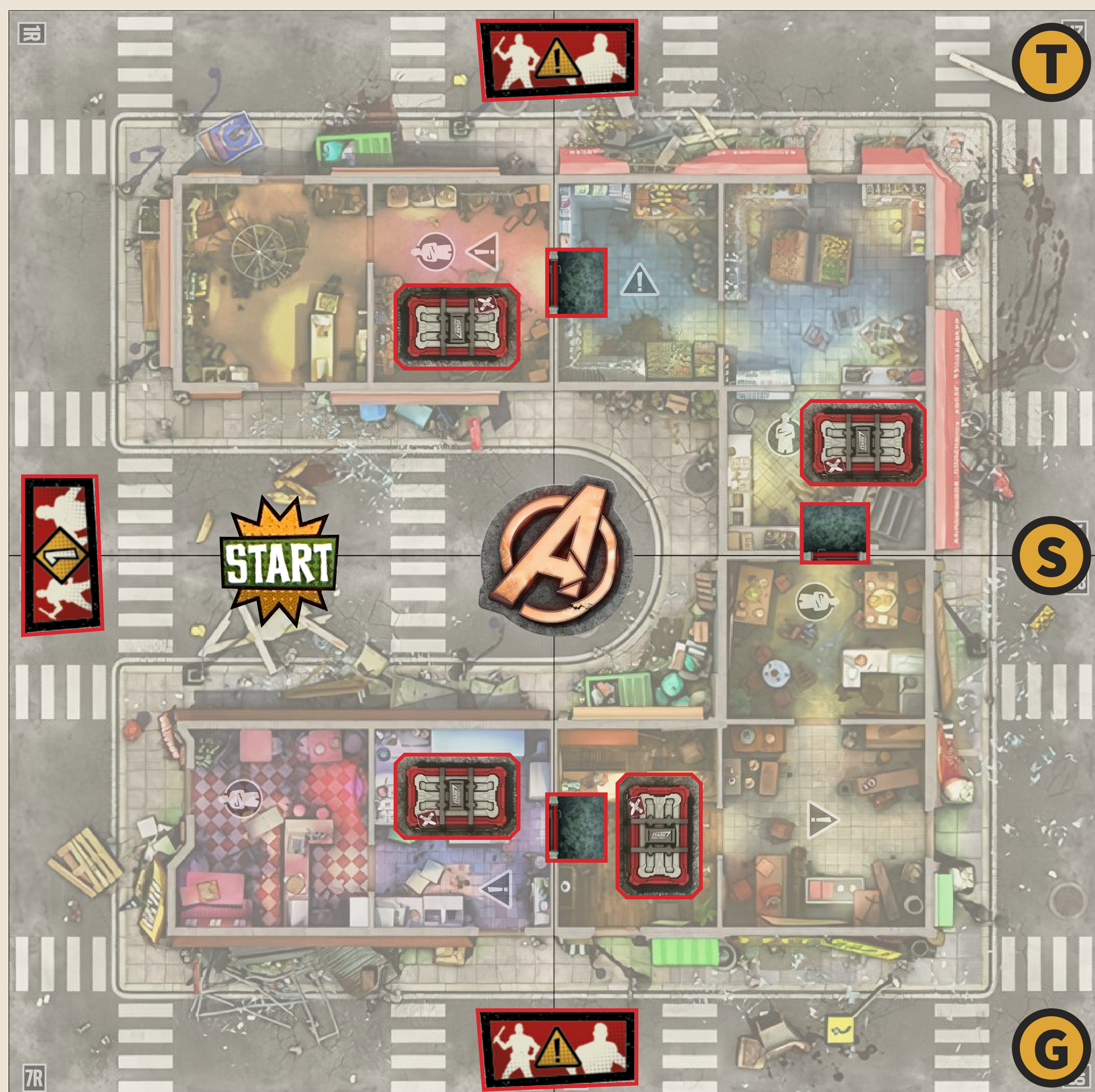
OBJECTIVES

Accomplish these objectives in any order:

- **Advent calendar.** Survive 12 enemy phases.
- **Gifts to wrap.** Take the Green and Blue Objectives.
- **Home for the holidays.** Reveal the *Secret Mission #1* and *#2* bystander cards.

Then,

- **See you next year!** Escape through the Exit Zone. Any Zombie Hero may leave through the Exit Zone if there are no enemies in it.



SPECIAL SETUP

- **12 Spawn Cards.** Place 12 spawn cards in a row next to the board.
- **11 Trooper Walking.** Spawn 11 troopers in the indicated zone.
- **10 Specialists Running.** Spawn 10 specialists in the indicated zone.
- **9 Guards Guarding.** Spawn 9 guards in the indicated zone.
- **8 Bystander Cards.** Shuffle the *Secret Mission #1* and *#2* cards among the bystander cards and place 2 in each bystander spawn zone.
- **7 Trait Cards.** Distribute 7 trait cards among the Zombie Heroes.
- **6 XP.** Each Zombie Hero starts with 6 XP.
- **5 Toughness Thor.** Place Thor's figure and spawn card next to the board.
- **4 Spawn Points.** Place Doctor Strange's figure and spawn card next to the board.
- **3 Ranged Enemy.** Place Ms Marvel's figure and spawn card next to the board.
- **2 Hidden Objectives.** Shuffle the Blue and Green Objectives among the Red Objectives and place face down.
- **And 1 Hidden Exit Zone.** Place the Exit token next to the board.

SPECIAL RULES

- **Christmas countdown.** The 1st spawn point takes from the spawn cards next to the board. When they have run out, draw from the spawn deck.
- **Fallen decor.** The Avengers Sign cannot be used.
- **Carolers not welcome.** Red Doors cannot be opened.
- **Presents!** Each objective gives 5XP to the Zombie Hero that takes it.
- **Down the chimney.** When *Secret Mission #1* is revealed, spawn Thor on the Avengers Sign. When *Secret Mission #2* is revealed, spawn Doctor Strange on the Avengers Sign. When the Blue Objective is taken, spawn Ms Marvel on the Avengers Sign.
- **An empty sleigh?** When the Green Objective is taken, place the Exit token in that zone.

